

Energy profiles in Finland

Nordisk Byggrträff 12.9.2019

Maarit Kari

Association of ProAgria centres

Senior advisor



Contents

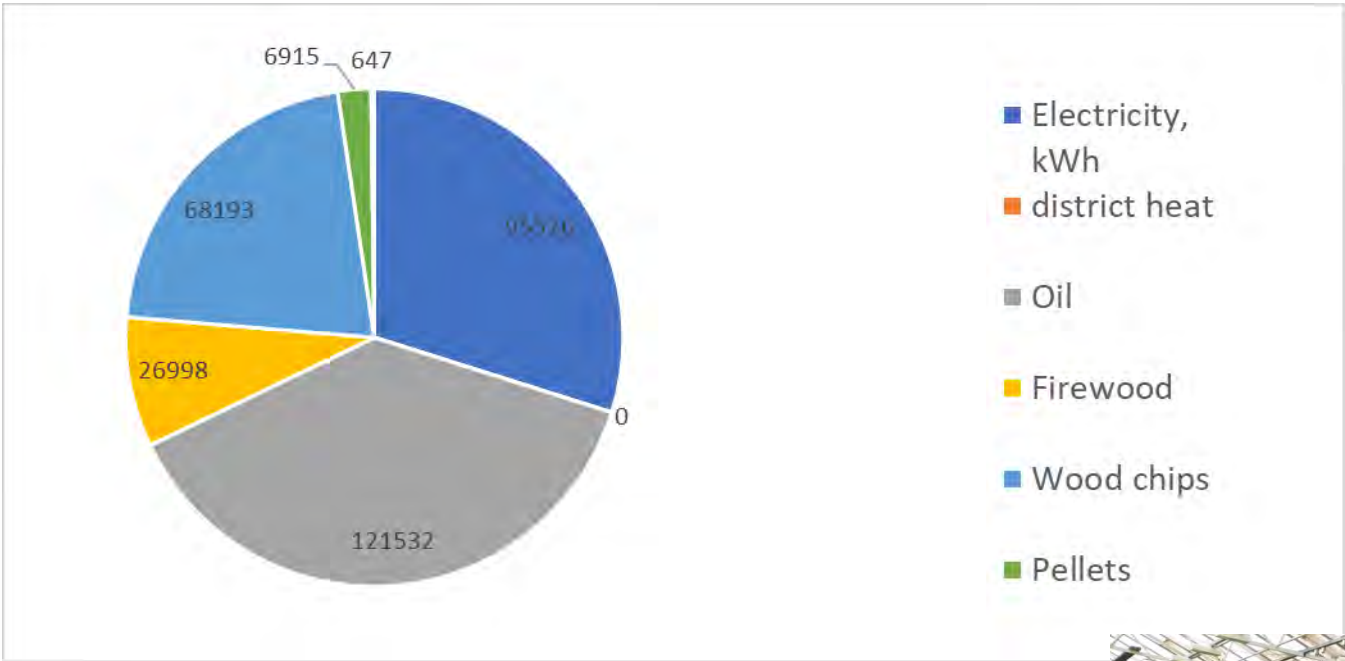
- "Big" picture
- Some profiles of energy use/distribution - saving energy on farms



Kuva: Maarit Kari



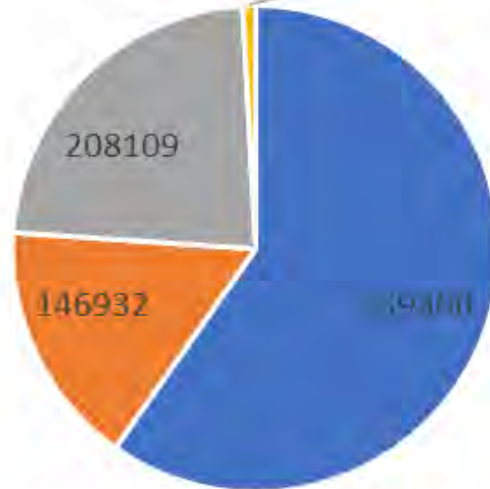
Energy sources (dairy)



Energy potential (dairy)



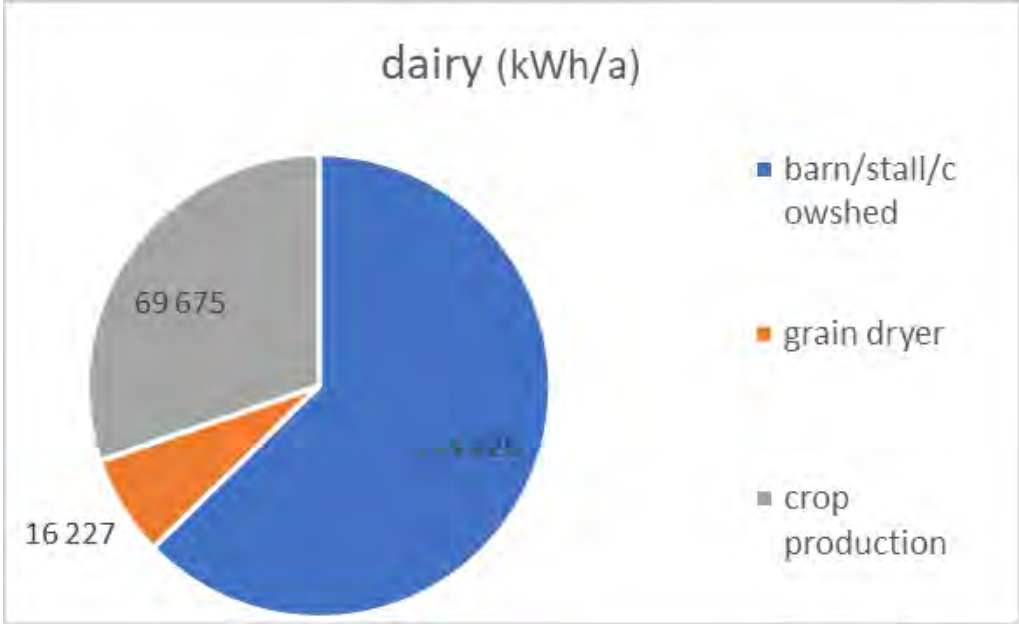
Energy potential kWh/a



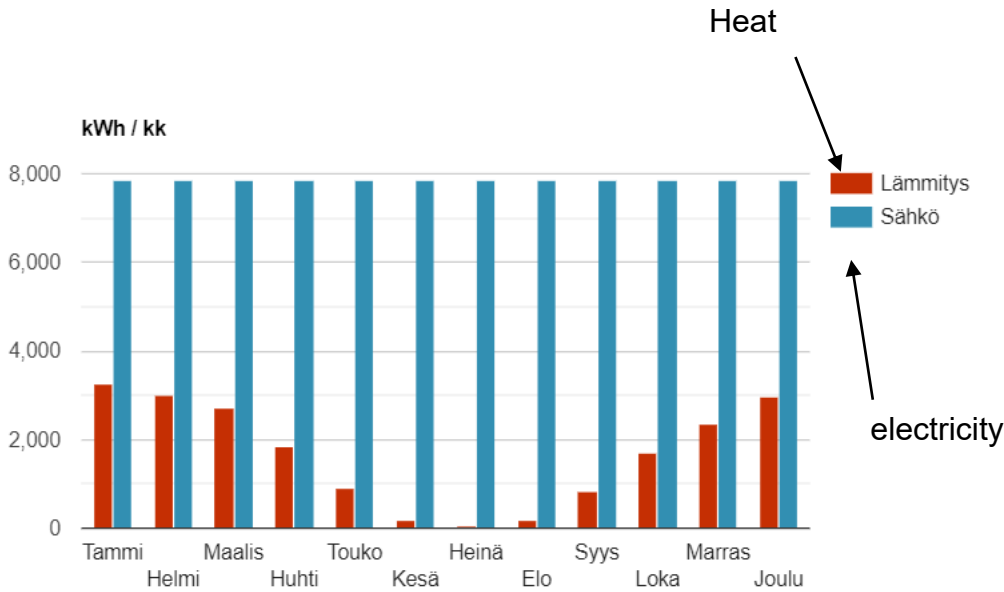
- wood energy (kWh/a)
- Straw kWh/a
- Manure (biog) kWh/a
- fallow, biog kWh/a



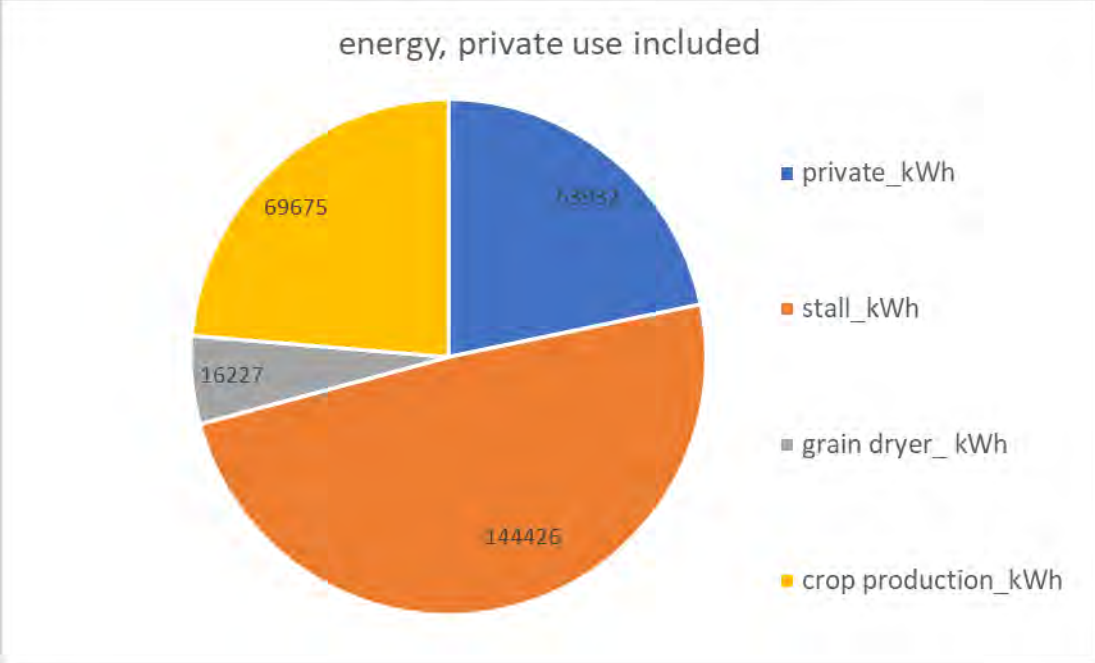
Energy for production, dairy



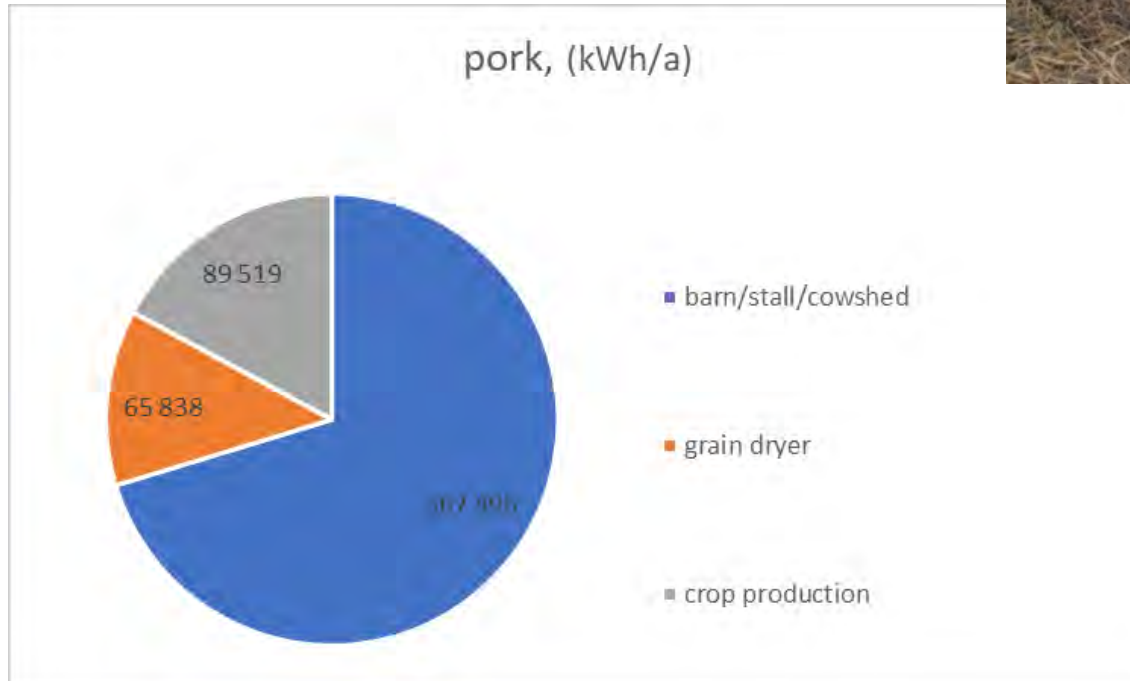
Energy profile, dairy



Private use included



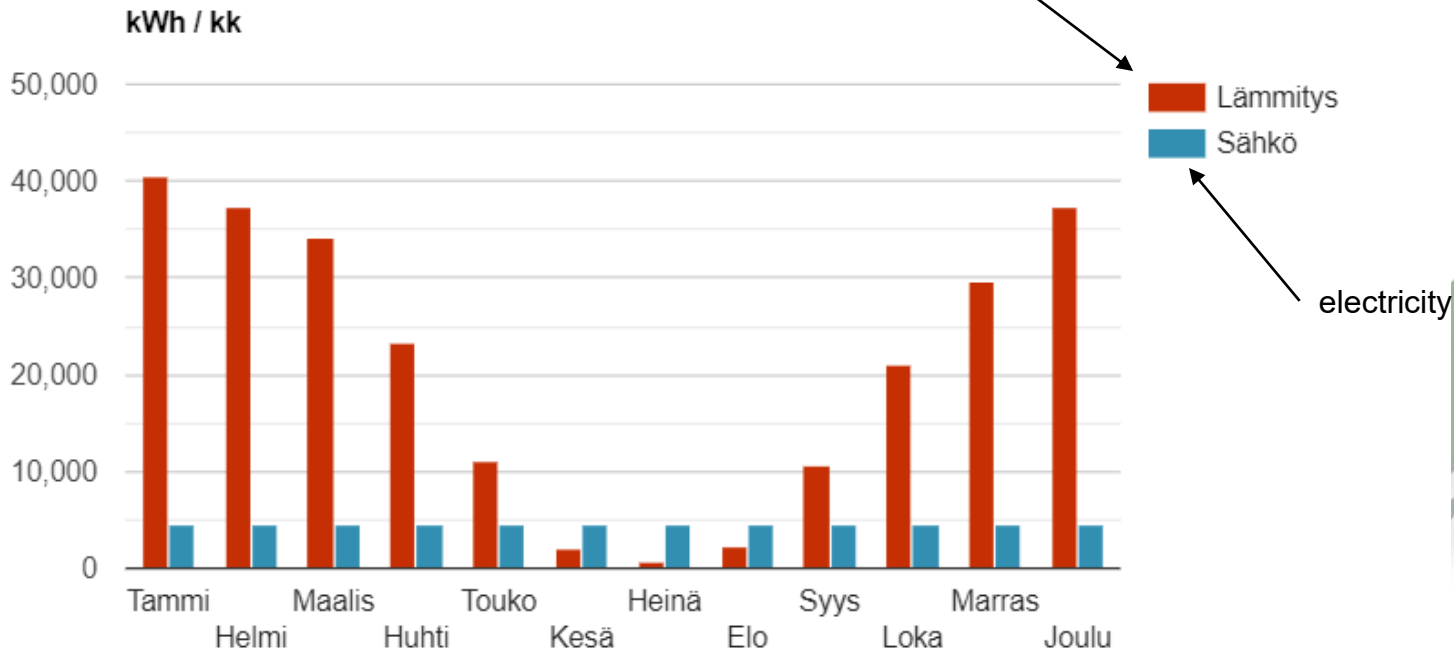
Energy for production, pork



Energy profile, pork



Heat

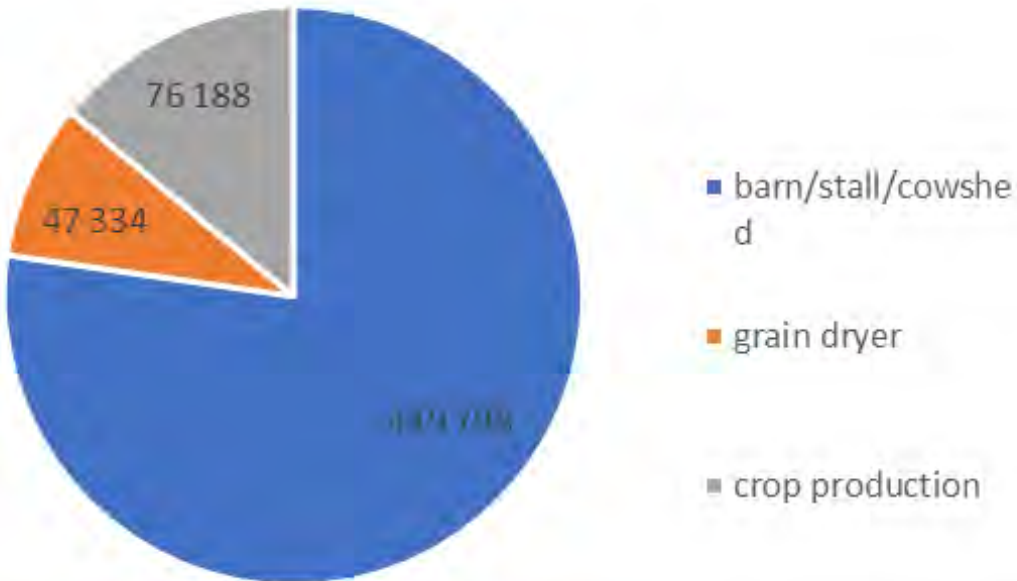


electricity

Energy for production, poultry



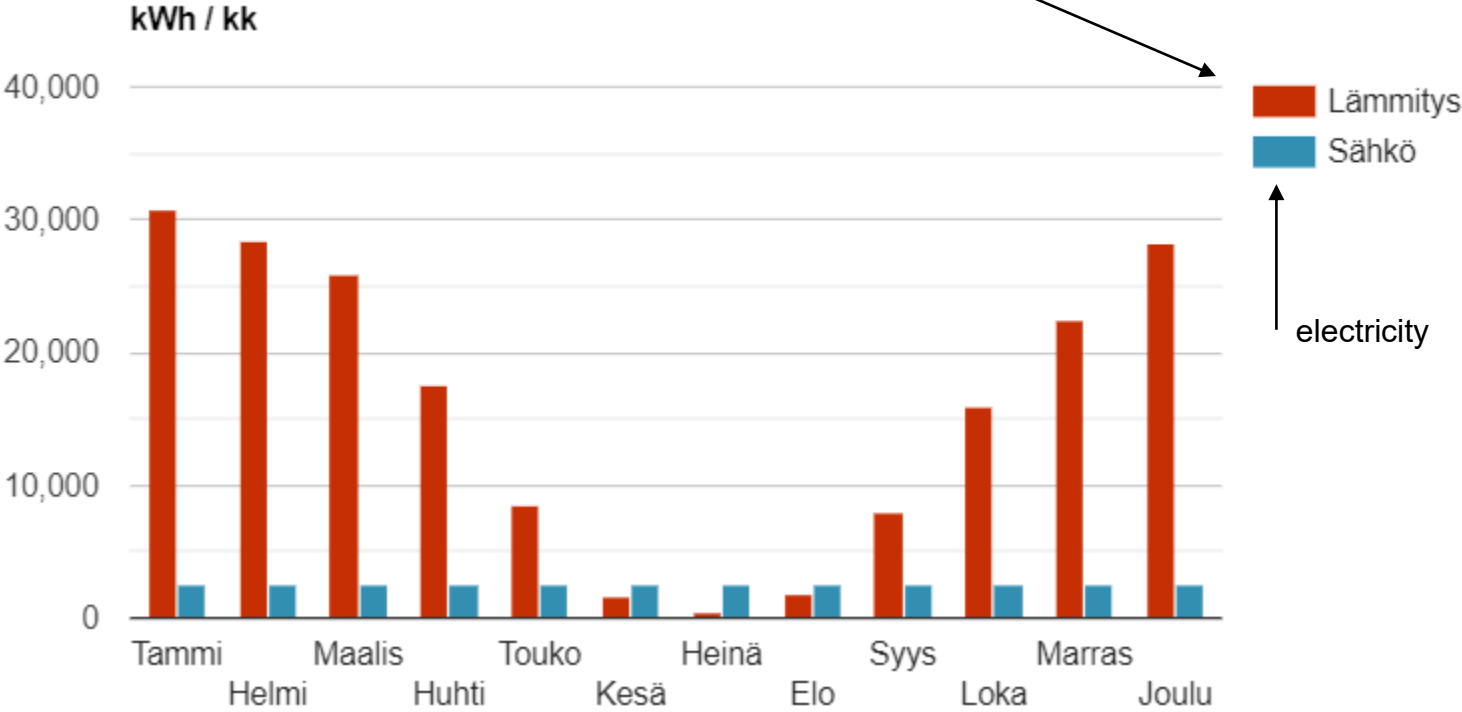
poultry (kWh/a)



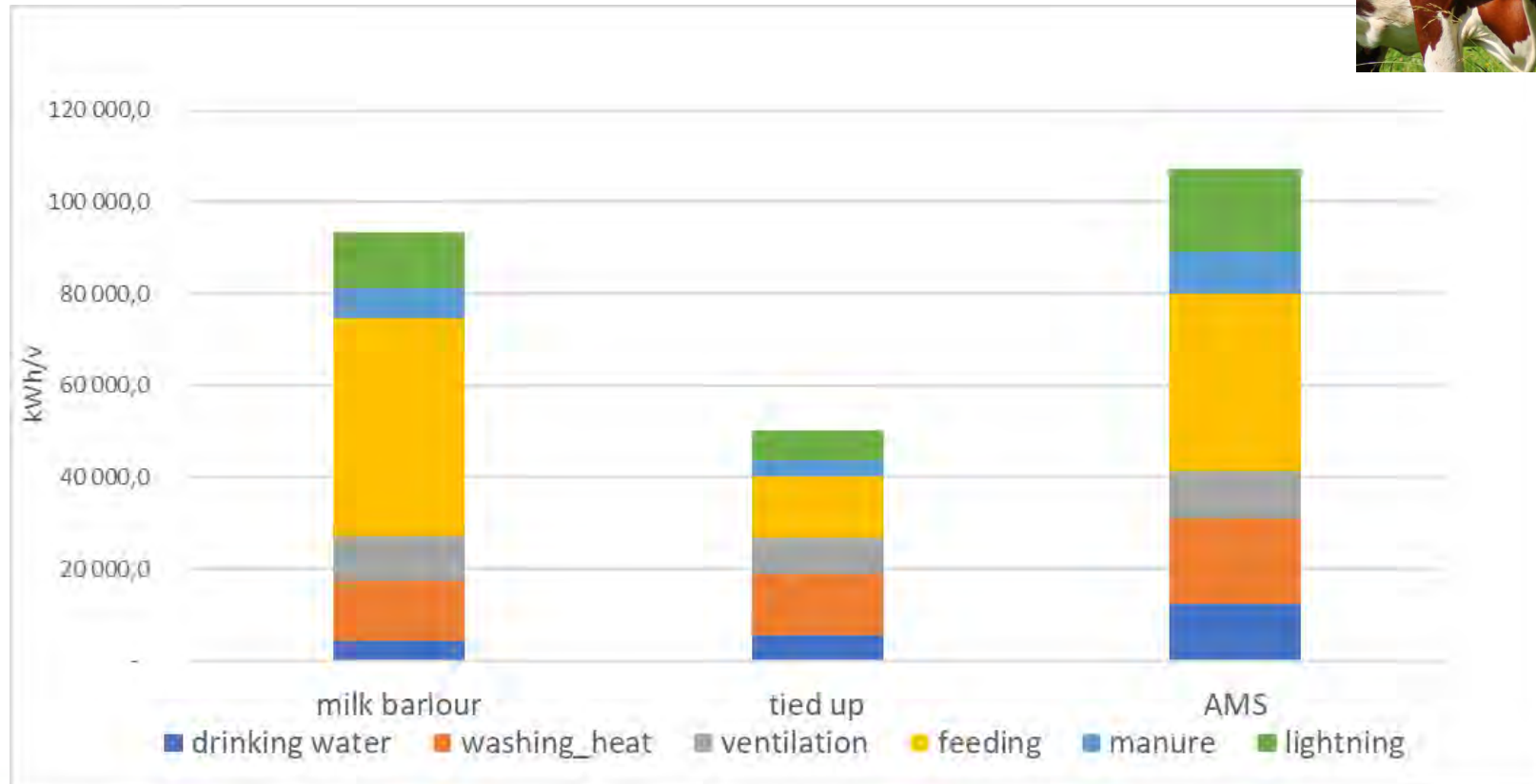
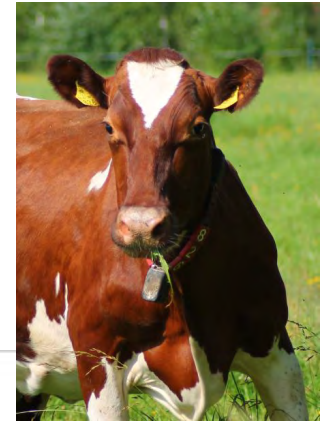
Energy profile, poultry



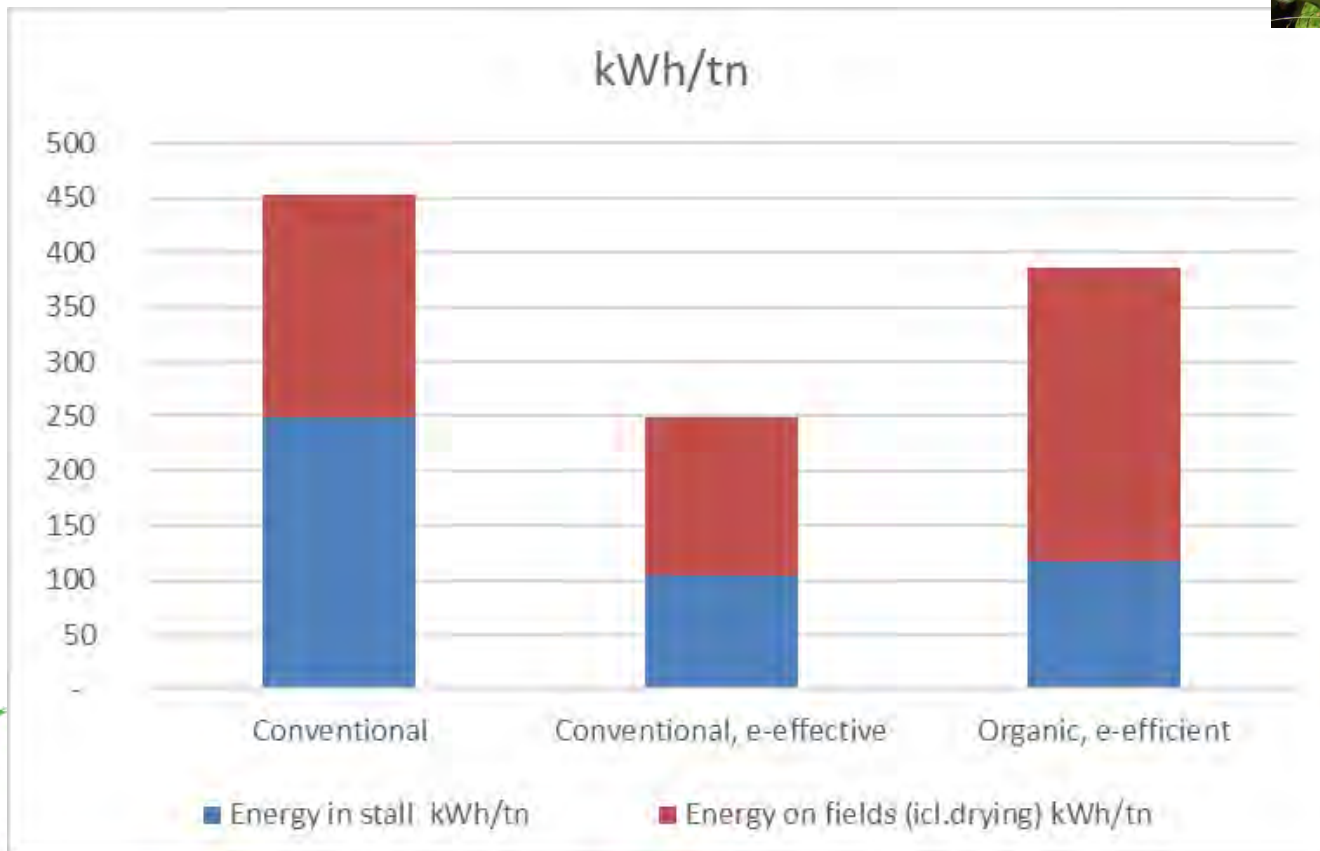
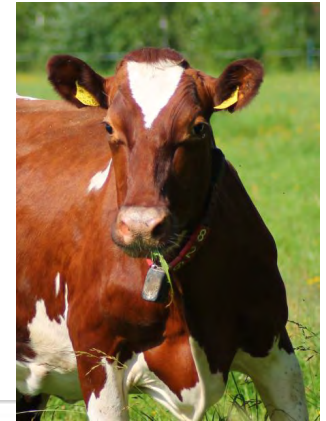
Heat



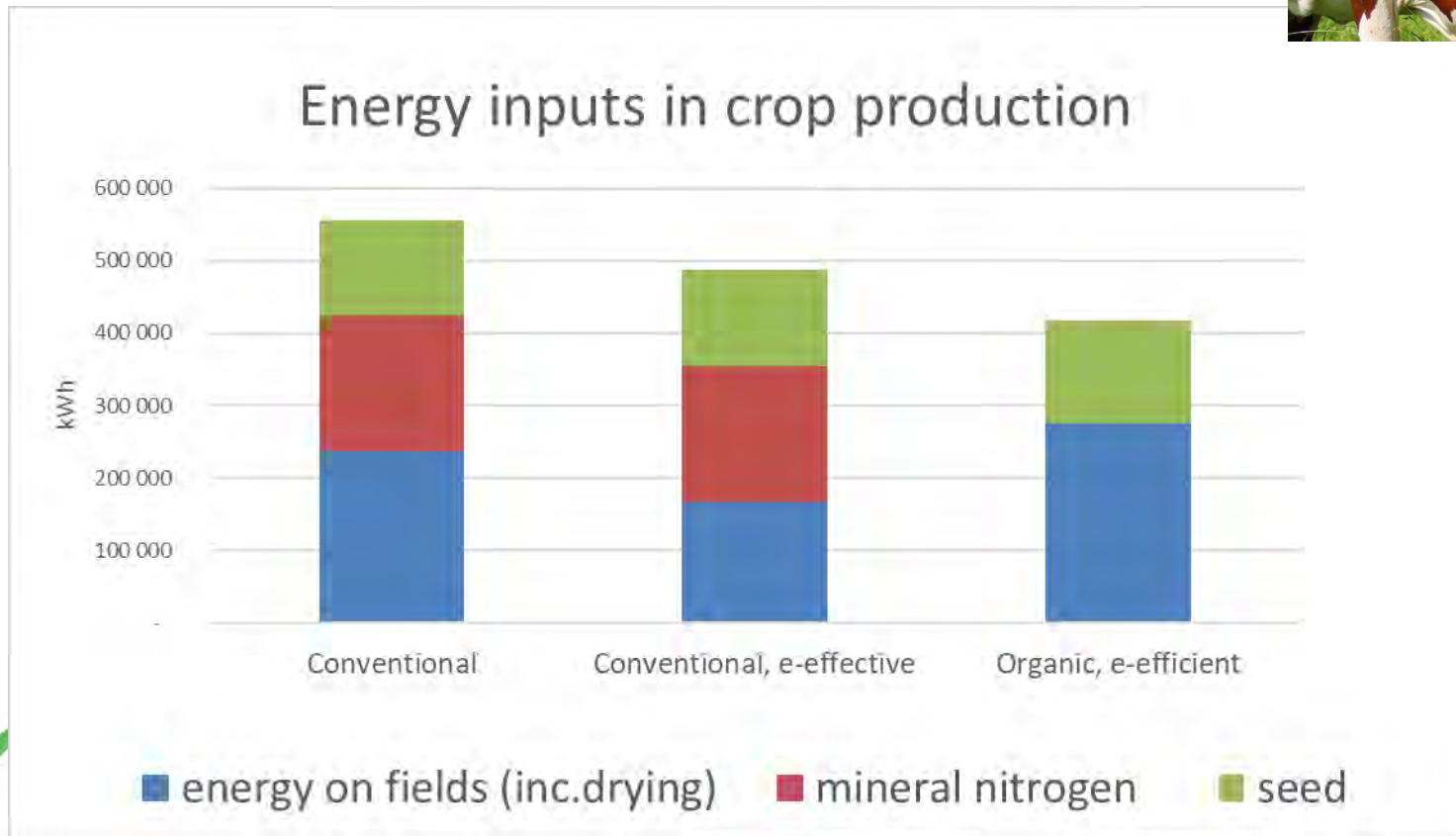
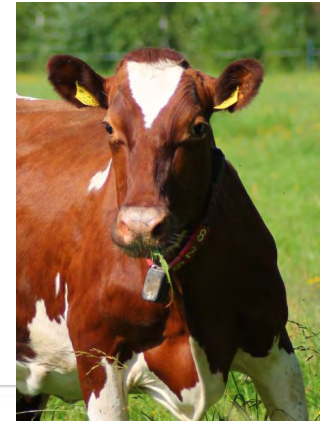
Stall types, energy distribution



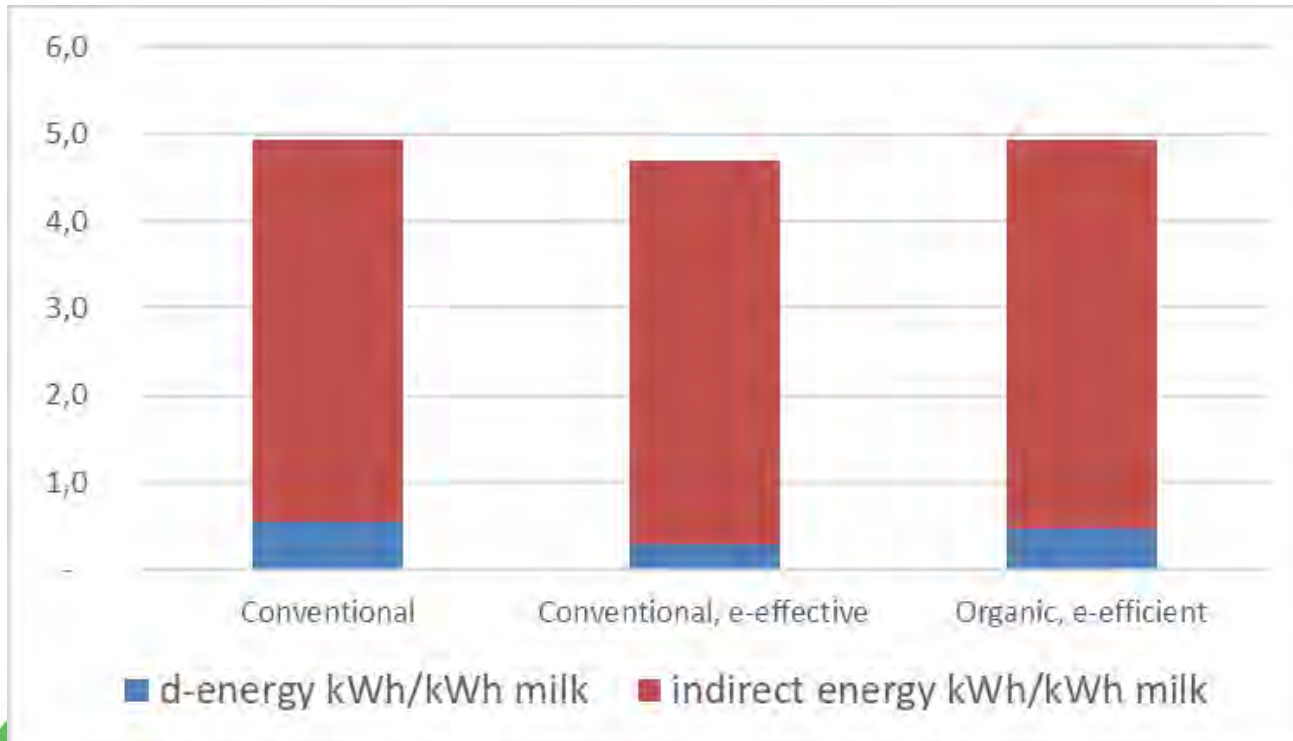
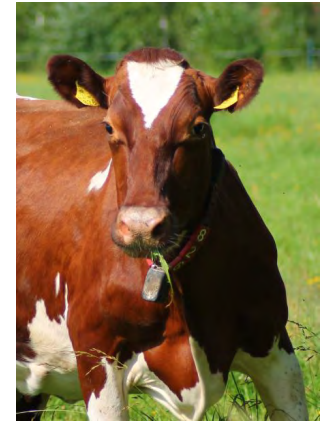
If all fodder was produced on farm – dairy (2 AMS)



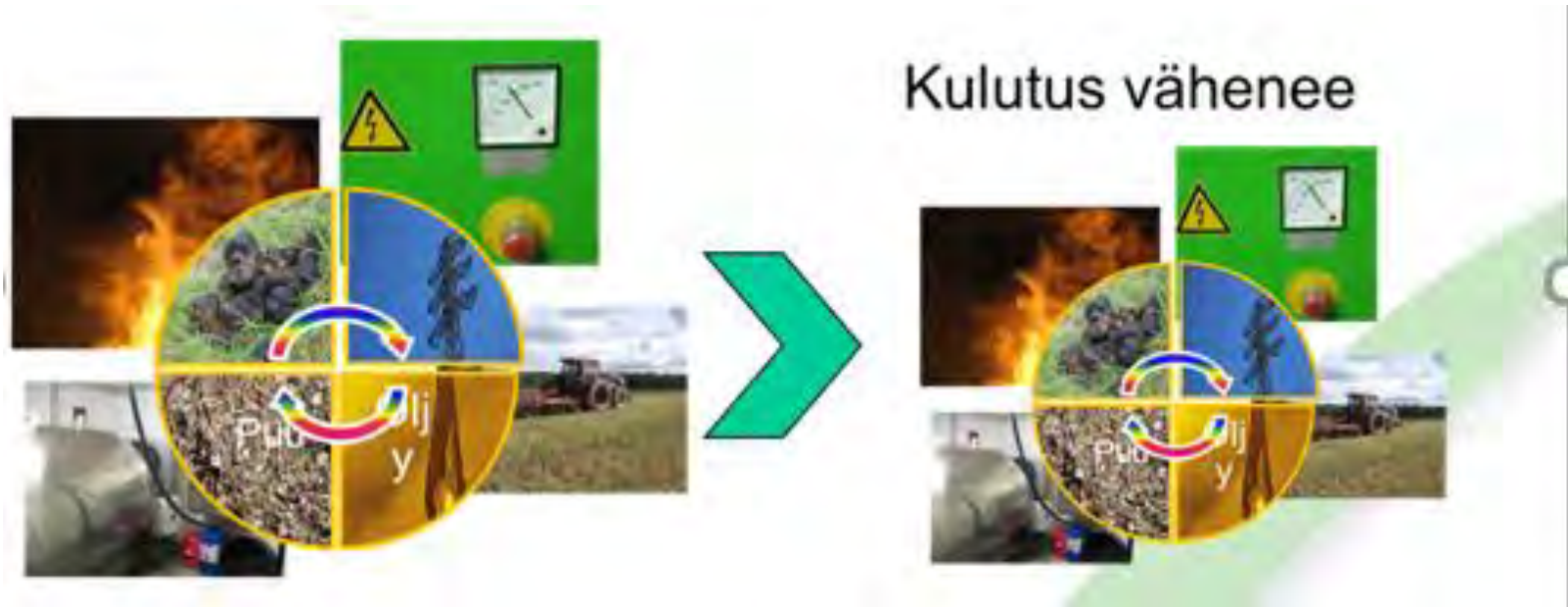
If all fodder was produced on farm – dairy (2 AMS)



Genetics (breeding) is very important, but energy efficiency makes the difference



Three approaches, I



Three approaches, II



Three approaches, III

