

Mælkeekvalitet for januar 2018 – april 2019

Månedlige geometriske gns. for kim, celler og frys for AMS/ikke-AMS,
malke-system og antal robotter

Antal mælkeproducenter med og uden AMS

Antal mælkeproducenter fordelt efter AMS (og antal robotter) og ikke-AMS 2018*

AMS-producenter

<i>Antal robotter</i>	<i>Antal producenter</i>	<i>% af AMS</i>	<i>% af alle</i>
1 - 2	334	51%	13%
3 - 4	236	36%	9%
5 -	82	13%	3%
AMS i alt	652	100%	25%

Ikke-AMS-producenter

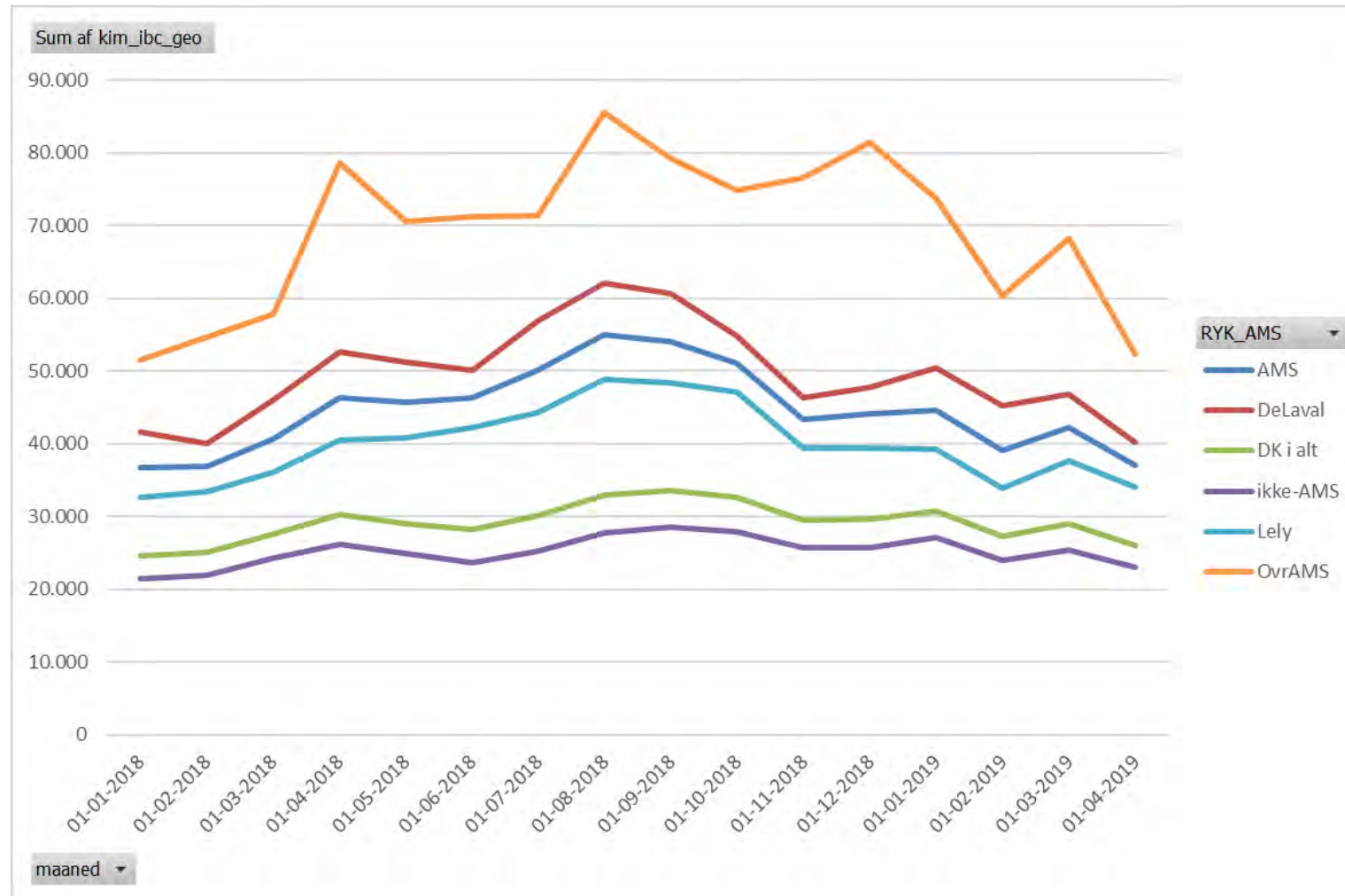
<i>Malke-system</i>	<i>Antal producenter</i>	<i>% af ikke-AMS</i>	<i>% af alle</i>
Bindestald	342	18%	13%
Karrusel	171	9%	7%
Side-By-Side	258	13%	10%
Sildeben	1.143	59%	44%
Tandem	27	1%	1%
Ikke AMS-producenter	1.941	100%	75%

Antal producenter i alt * **2.593** **100%**

* beregnet på baggrund af data fra RYK, dvs der mangler ca. 10%

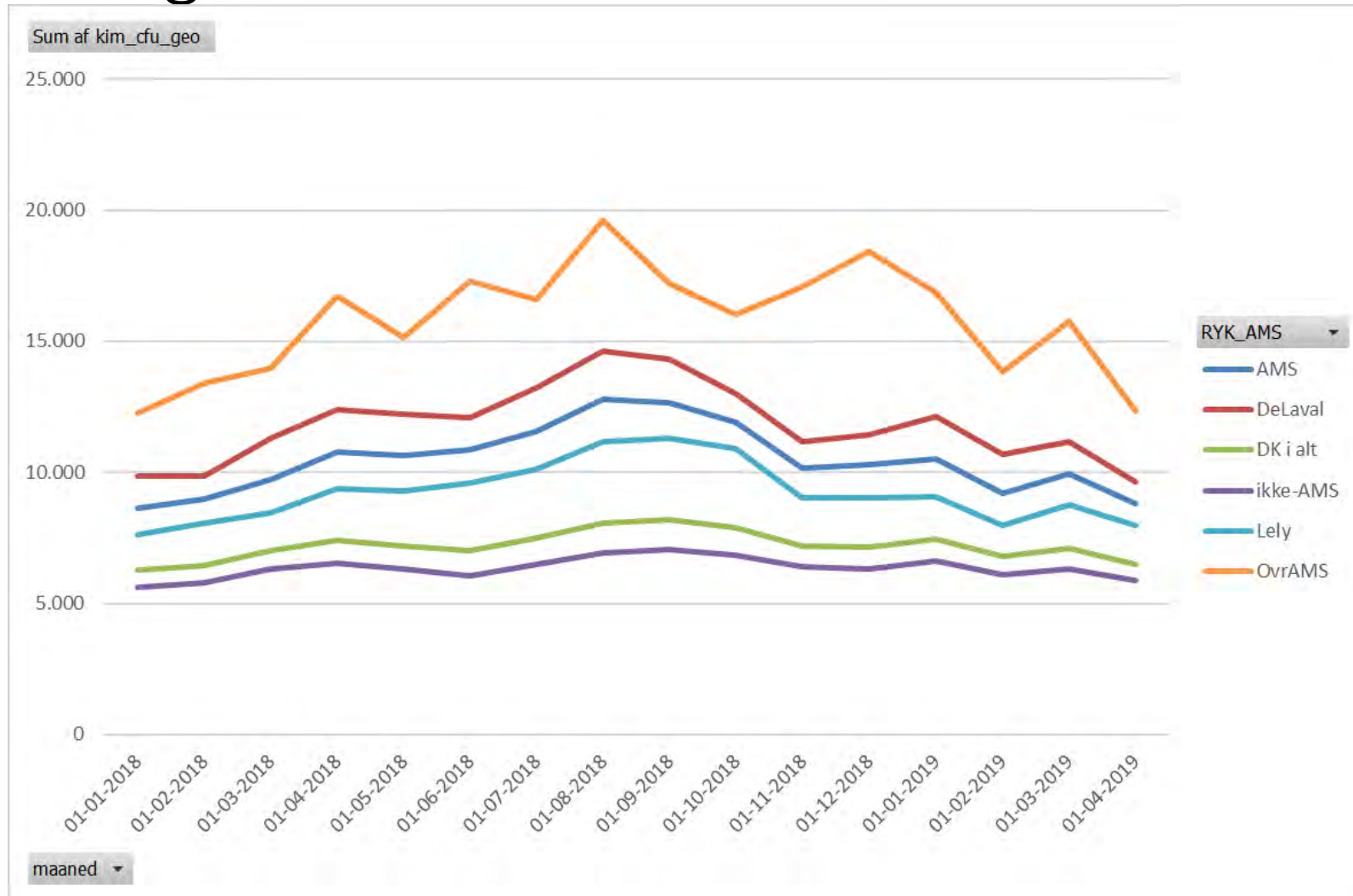
Kimtal (ibc) i Danmark

Geometrisk gns



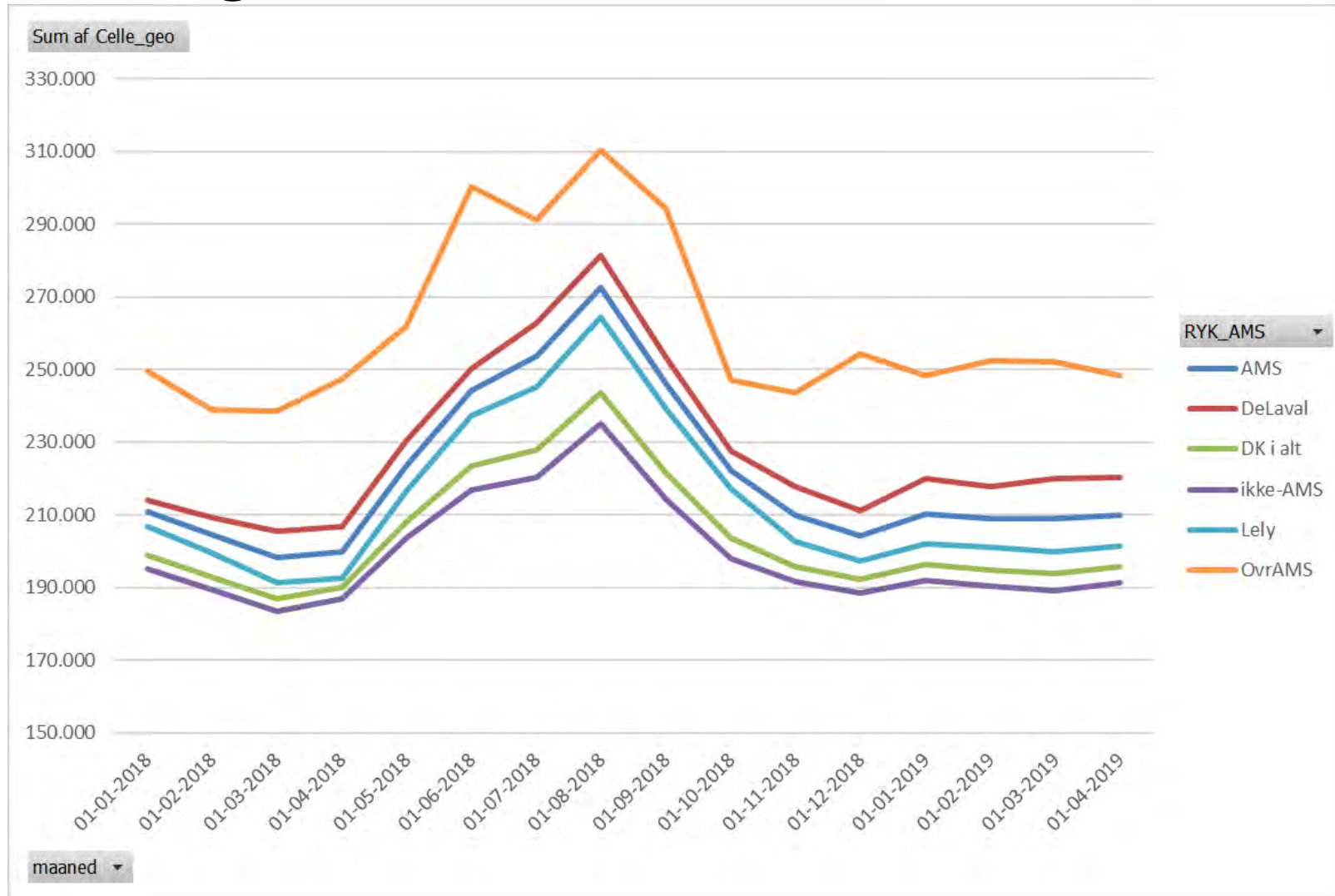
Kimtal (cfu) i Danmark

geometrisk gns

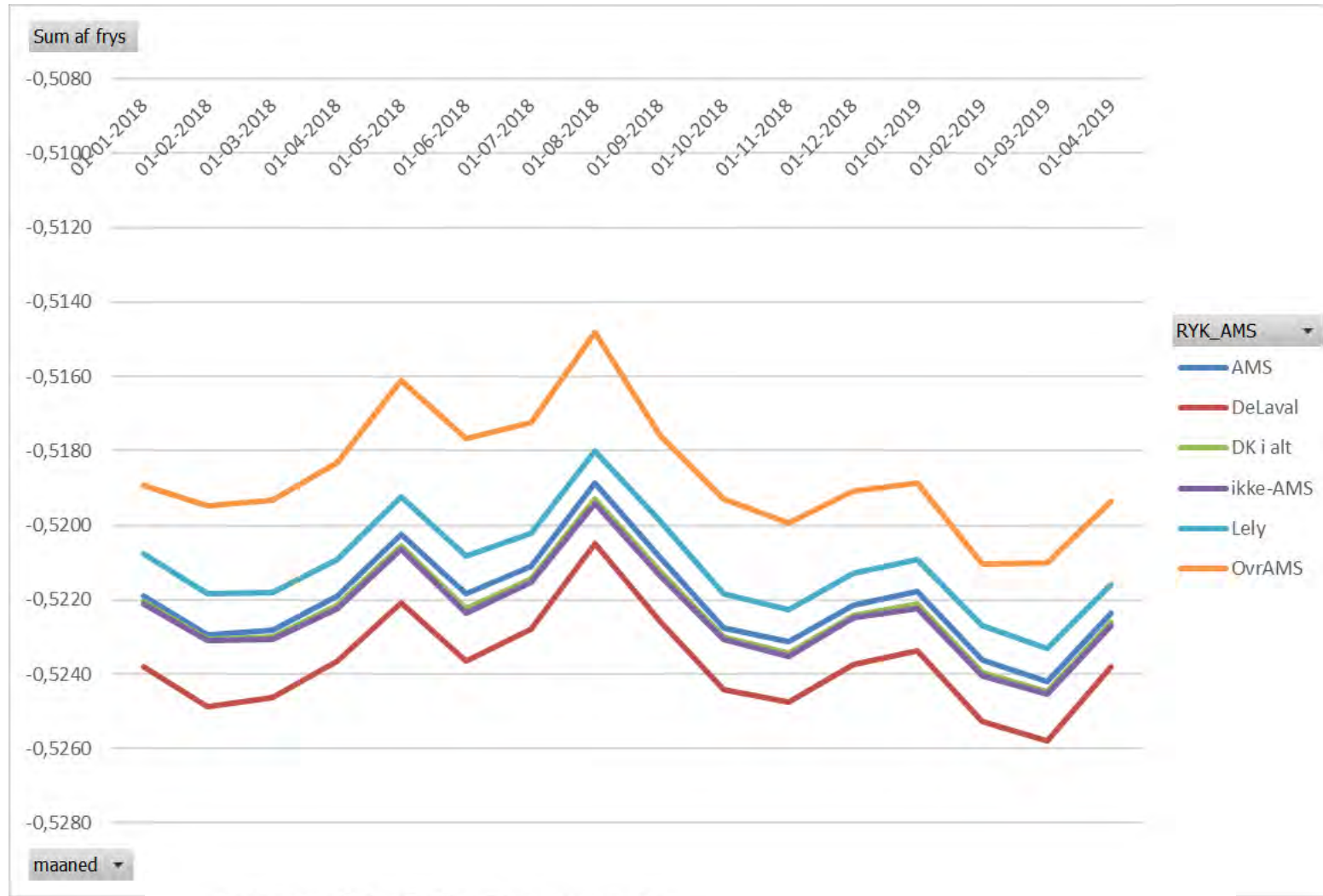


Celletal i Danmark

Geometrisk gns



Frysepunkt i Danmark



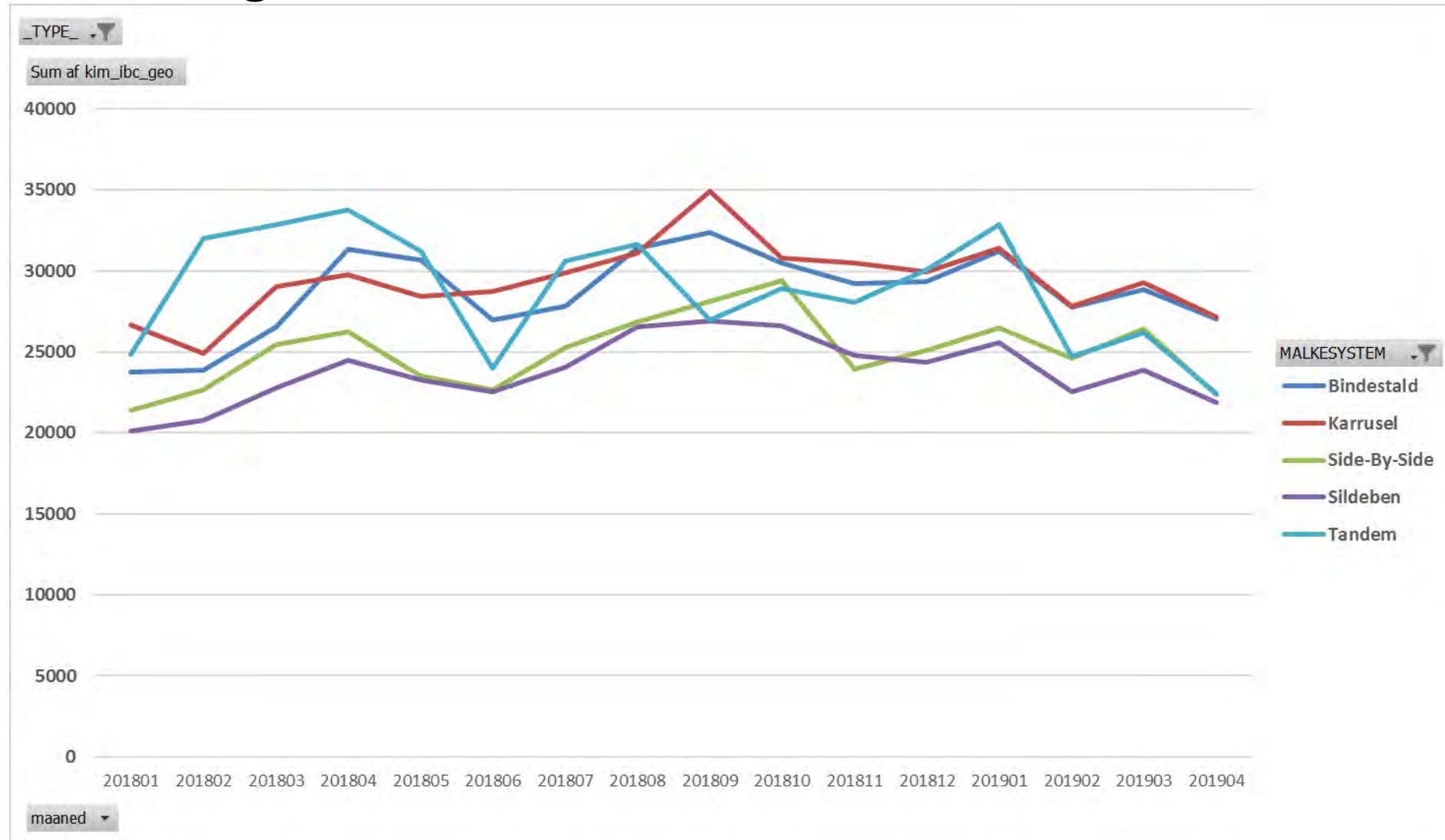
Kimtal (cfu) i Danmark
geometrisk gns

Sum af KimTals_gns

-25.000

Kimtal (ibc) i Danmark – ikke-AMS - malkesystem

Geometrisk gns

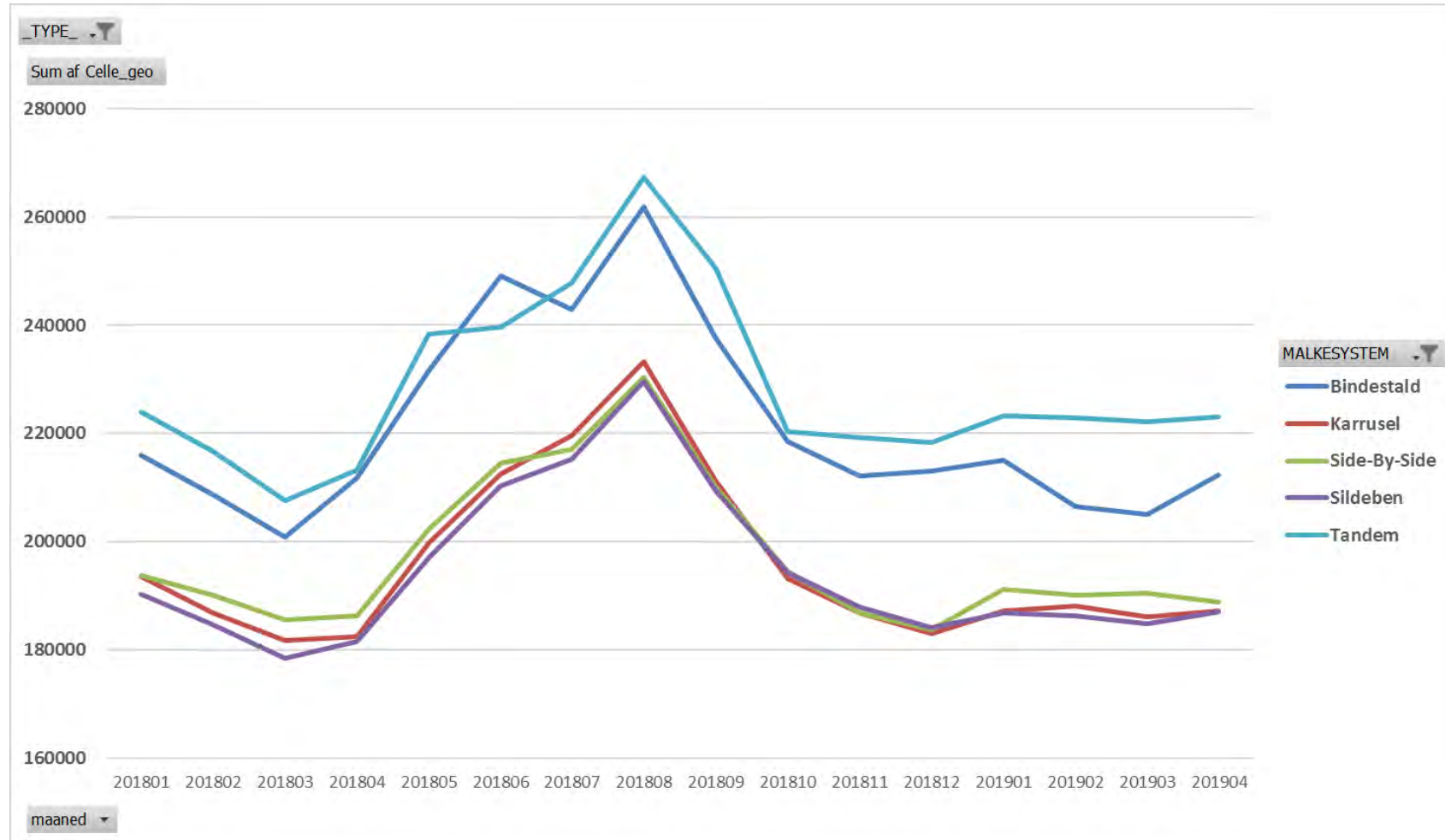


Kimtal (cfu) i Danmark – ikke-AMS malkesystem geometrisk gns

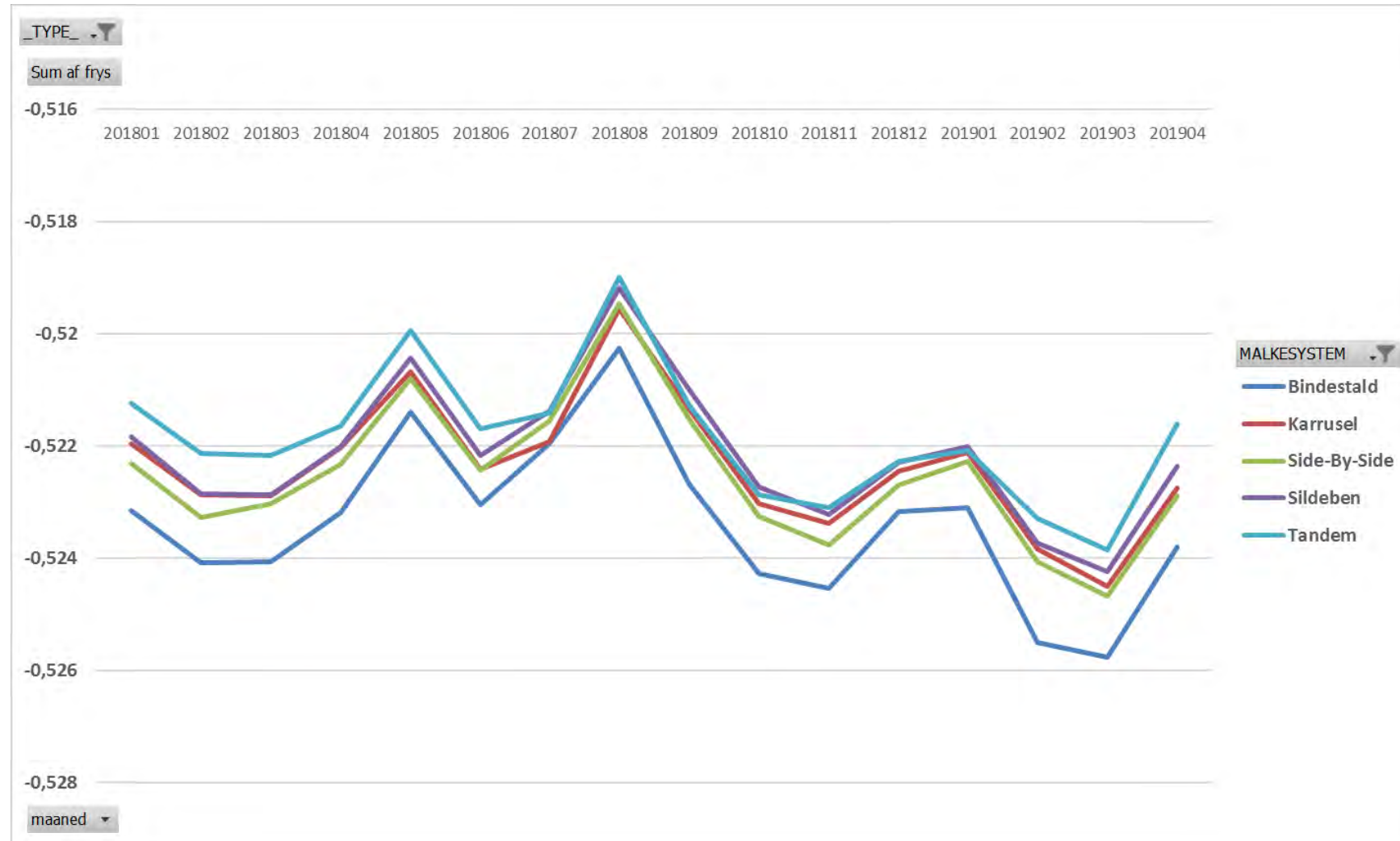


Celletal i Danmark – ikke-AMS malkesystem

Geometrisk gns



Frysepunkt i Danmark – ikke-AMS - malkesystem



Kimtal (ibc) i Danmark - AMS – antal robotter

Geometrisk gns ift antal robotter (1-2, 3-4 eller >4)



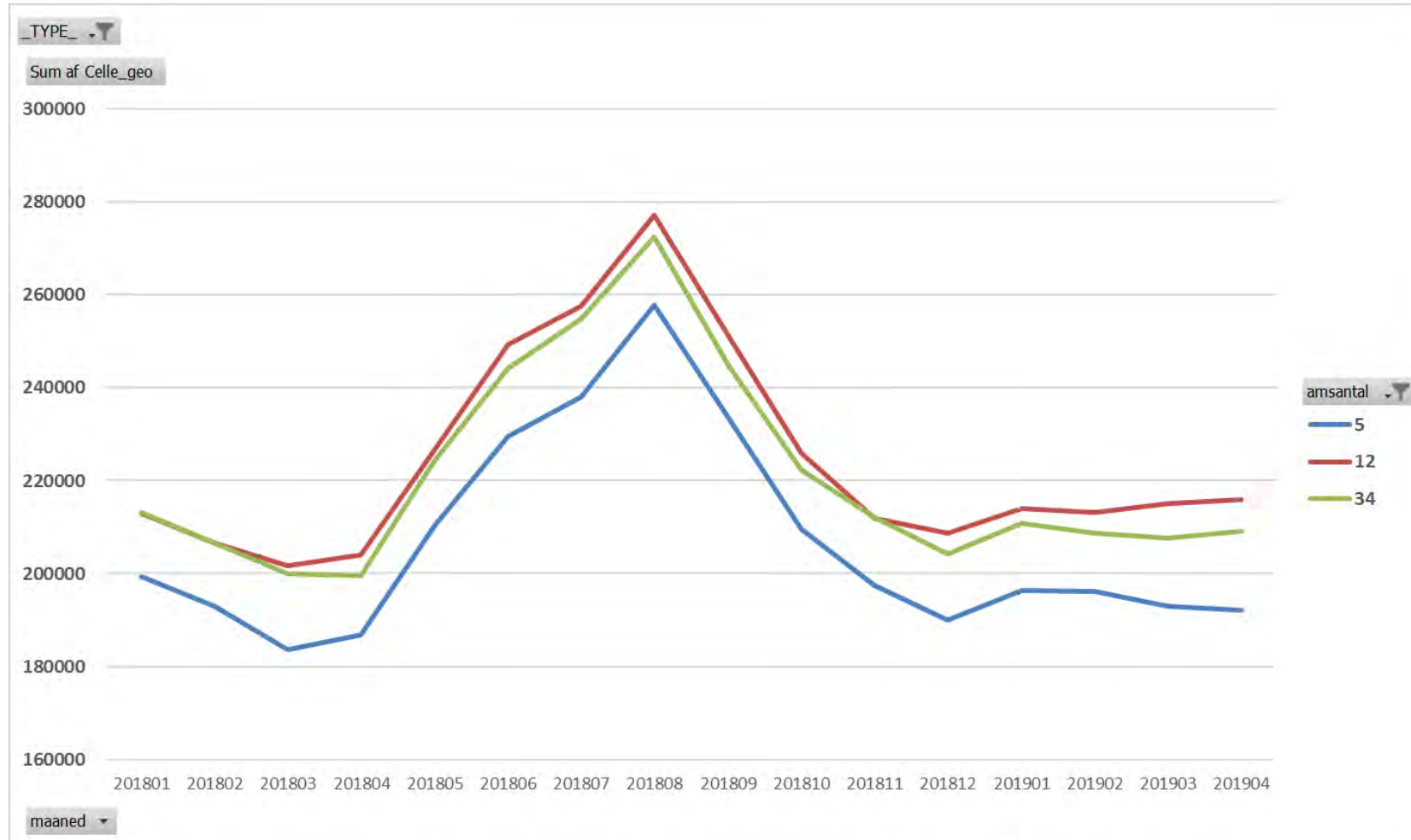
Kimtal (cfu) i Danmark – AMS – antal

Geometrisk gns ift antal robotter (1-2, 3-4 eller >4)



Celletal i Danmark - AMS – antal robotter

Geometrisk gns ift antal robotter (1-2, 3-4 eller >4)



Frysepunkt i Danmark - AMS –antal robotter

(1-2, 3-4 eller >4)

